

ESG & Sustainability Monitoring

Environmental, social, and governance (ESG) criteria include important guidelines to assess supplier, vendor, and other third-party sustainability, human rights, and corporate policies. As more governments consider legislating ESG and sustainability regulations, companies must sift through mountains of ESG reporting data to meet supply chain compliance requirements.

Standardize and simplify supply chain ESG compliance

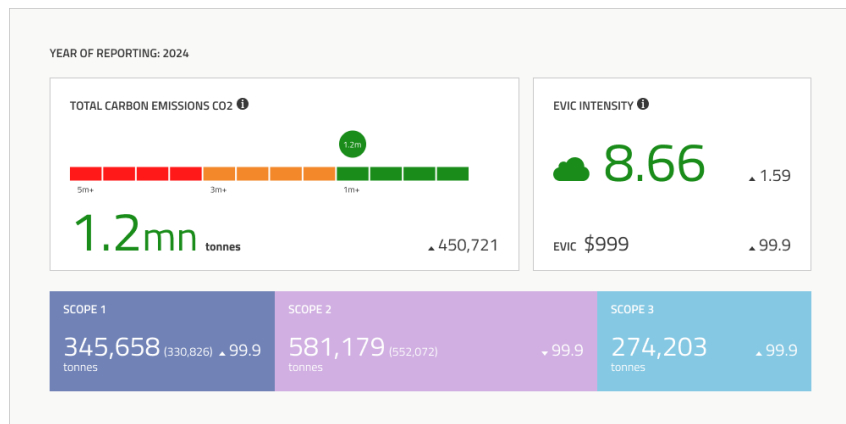
The Prevalent Third-Party Risk Management Platform centralizes ESG monitoring data and correlates it with the results of questionnaire-based ESG risk assessments to standardize and simplify global ESG compliance reporting across your supply chain. Features include:

- Globally sourced, standards-based data from a recognized leader in ESG and sustainability reporting.
- Advanced sustainability ratings and scores, including scope emissions and EVIC.
- Analyst-curated negative news and controversies to deliver visibility into potential reputational concerns.
- A comprehensive library of global sustainability questionnaires with built-in remediation guidance to benchmark reporting.
- A centralized risk register of assessment results and sustainability data for investigation, triage, and task and event management.

Key Benefits

- Save time by providing one-stop access to thousands of ESG scores and intelligence fully aligned with other third-party risks
- Reduce the risk of false positives and false negatives with analyst-validated reporting
- Reduce risk by improving visibility into potential ESG-related supplier reputational problems
- Improve consistency of ESG insights to simplify compliance and audits

Prevalent consolidates and improves consistency of ESG insights and reporting to deliver visibility into potential reputational and compliance issues.



Key Features

Supplier Pre-Screening

Build [comprehensive supplier profiles](#) that compare and monitor supplier demographics, fourth-party technologies, ESG scores, information from the EPA Environmental Crimes Database, sustainability ratings, recent business and reputational insights, data breach history, and financial performance. See results in line with [RFx responses](#) for a holistic view of supplier risk.

Scope 1, 2 and 3 Emissions Reporting

Review analyst-validated scope 1, 2 and 3 data for suppliers' direct and indirect emissions. Compare supplier data over time and against industry averages.

Financial Governance & Transparency Monitoring

Tap into financial information from a network of millions of businesses across 160+ countries. Access five years of organizational changes and financial performance, including turnover, profit and loss, shareholder funds, and more.

Politically Exposed Persons (PEP) Screening

Screen against a global PEP database with access to over 1.8 million politically exposed person profiles, including families and associates, to instantly identify potential leadership risks.

Central Risk Register

Normalize, correlate, and analyze assessment results and continuous monitoring intelligence for unified risk reporting and remediation.

Built-in Remediation Guidance

Take actionable steps to reduce ESG risk with built-in remediation recommendations and guidance.

ESG Risk Assessment

Leverage a dedicated ESG risk assessment that examines risks from ten common domains including: Community, CSR Strategy, Emissions, Human Rights, Innovation, Management, Product Responsibility, Resource Use, Shareholders, and Workforce.

EVIC Intensity Reporting

Calculate carbon EVIC (equivalent value in cash) intensity for each supplier to understand climate impact and inform supplier selection decisions.

Supplier Reputation & Sanctions Monitoring

Access qualitative insights from over 550,000 public and private sources of reputational information, including analyst-curated negative news, regulatory and legal actions, sanctions, adverse media, OFAC violations, conflicts of interest, and more.

Comprehensive ESG Compliance Mapping

Simplify ESG compliance reporting by mapping assessment results and risks to common ESG and sustainability frameworks including:

- [EU Corporate Sustainability Reporting Directive \(CSRD\)](#)
- [German Corporate Supply Chain Due Diligence Act \(LkSG\)](#)
- Global Reporting Initiative (GRI)
- ISO 26000
- Sustainability Accounting Standards Board (SASB)
- Task Force on Climate-Related Financial Disclosure (TCFD)
- United Nations Global Compact (UNGC)

Priority	Category	Type	Status	Tasks	Attached Risk	Date	Options
L	E.1.12 Operations Incidents	Emissions, Effluents and Waste	Open	0	-	07/05/2024	VIEW [up] [down] [refresh] [delete]
Details: Lorem ipsum dolor sit amet, consectetur adipiscing elit, sed do eiusmod tempor incididunt ut labore et dolore magna aliqua.							
M	E.2.2 Environmental Supply Chain Incidents	Energy Use and GHG Emissions	Open	0	-	07/05/2024	VIEW [up] [down] [refresh] [delete]
Details: Lorem ipsum dolor sit amet, consectetur adipiscing elit, sed do eiusmod tempor incididunt ut labore et dolore magna aliqua.							
H	E.3.2 Product & Service Incidents	Land Use and Biodiversity	Open	0	-	07/05/2024	VIEW [up] [down] [refresh] [delete]
Details: Lorem ipsum dolor sit amet, consectetur adipiscing elit, sed do eiusmod tempor incididunt ut labore et dolore magna aliqua.							

Analyst-curated events ensure that the right risks are raised for further examination.

Take the unified approach to third-party risk

The Prevalent Third-Party Risk Management (TPRM) Platform unifies supplier management, risk assessment, and threat monitoring to deliver a 360-degree view of risk. The platform makes it easy to onboard suppliers; assess them against standardized and custom questionnaires; correlate assessments with external threat data; reveal, prioritize and report on the risk; and facilitate the remediation process.

Learn more at www.prevalent.net